

CONTINUOUS ROOM DISINFECTION

GERMBUSTER Air Cleaner

COMMERCIAL GRADE HEPA

Scrubs Air Quieter at Half the Cost of Competing Products. Available in Two Models.

The GERMBUSTER line of commercial grade air cleaners is built with the same quality as a HEPACART®. It is rugged, simple to operate, requires little maintenance and highly effective in continually reducing the viral load in the environment.



Two Models

GERMBUSTER 300

Continuous air cleansing via commercial grade air filtration for everyday use in high-traffic areas.

GERMBUSTER FAR-UV

Continuous air cleansing via commercial-grade air filtration and FAR-UV disinfection for the most critical air-quality environments.



Many Applications

Hospital suites
Waiting areas
Dentist offices
Conference rooms
Common areas
Laboratories
Classrooms
Nurses Offices
Assisted Living
Apartments
Residential
Casinos VIP Rooms



Energy Savings

Both models feature an energy-efficient, high-performance fan featuring an ECM (Electronically Commutated Motor) requires up to 88% LESS energy.

Result:
Lower cost of use

**GERMBUSTER
looks great
in any
environment**



Germbuster Commercial Air Purifier

Consumables



GERMBUSTER 300

GERMBUSTER FAR UV

Working Dimensions:

16 in. L x 16 in. W x 25 in. H

Variable Air Speed

up to 330 cfm

Working Weight:

50 lbs.

MODEL: HFGB300

Working Dimensions:

16 in. L x 16 in. W x 32 in. H

Variable Air Speed

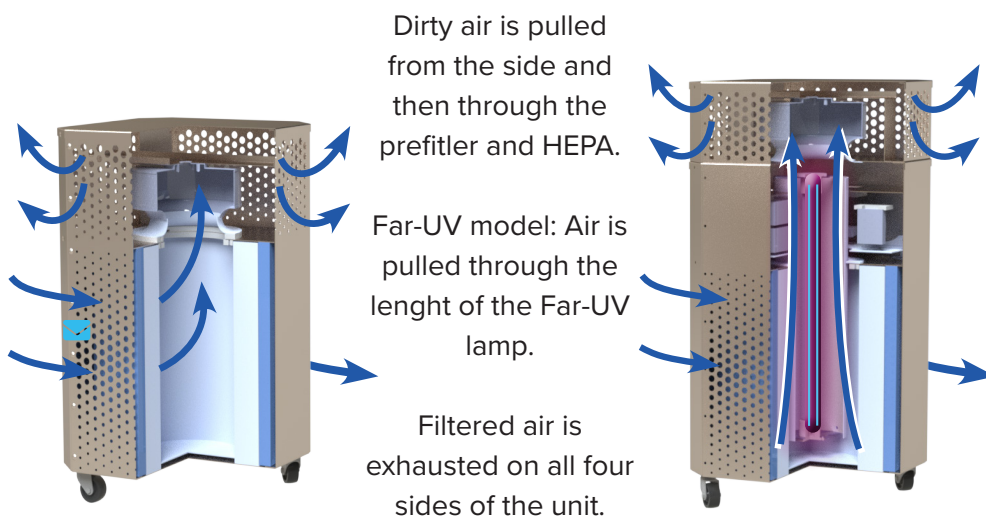
up to 330 cfm

Working Weight:

68 lbs.

MODEL: HFGBRFUV

How it Works



HEPA FILTERS

Round, aluminum framed
99.97% HEPA filter.

PART #: FUV-GB.HF



PRE FILTERS

Mesh pre-filters wrap
the HEPA-filter.

MODEL: HFGBR.PPF

LAMP

18" CARE
222 lamp

3,000 hour
lifetime



MODEL: FUV-ADM.RLMP.USH

GERMBUSTER Features



Filtration

HEPA-Filter: 99.97% exceeds
ASHRAE 52.2 MERV 16 ratings

MERV-7 pleated pre-filter
protects the HEPA

Each filter tested per
IEST standards:
Air flow IEST-RP-C001.

Easy HEPA and
pre-filter changes.



Fan Motor

ECM fan motor uses
up to 88% less energy

50,000 hour life expectancy =
years of continuous use.

Quieter than competing models.
42-point quality inspection.

Precision-tuned, variable speed
air volume control for
GERMBUSTER 300 and
optimal 1-speed setting f
or GERMBUSTER Far-UV.



State of the Art UV Technology

GERMBUSTER with FAR-UV
includes one lamp with
3,000-hour lifetime.

300-watt power supply.

Provides disinfection of air
in a single pass.

High reflectivity lamp tube
for maximum exposure.

FAR-UV lamp sight glass.



Convenience

Easy to move.

Simple operation.

Child-proof filter cabinet.



Build Quality

Same build quality as
the flagship HEPACART®

Constructed out of
commercial grade
stainless steel and
blind self-sealing rivets.

Unit moves on
heavy-duty casters.

Looks professional in
in any environment.

Easy to clean and maintains
appearance with
no discoloration from
daily cleanings.



Electrical

US 120 v AC
50/60 Hz | 6-12 Amps



Self-storing 8 ft. commercial
grade power cord.

Applications



Hospitals and Clinics



Schools



Assisted Living



Office

GERMBUSTER FAR-UV EFFICACY

GERMBUSTER EFFICACY AT DOSES OF 222-NM FAR-UVC LIGHT AT 330 CFM

To estimate effective Far-UVC dosing with the GERMUSTER FAR-UV, we have measured the lamp intensity as installed and calculated the average dose achieved on the airstream.

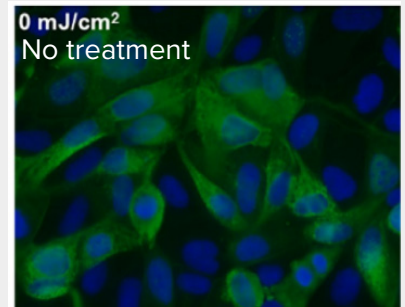
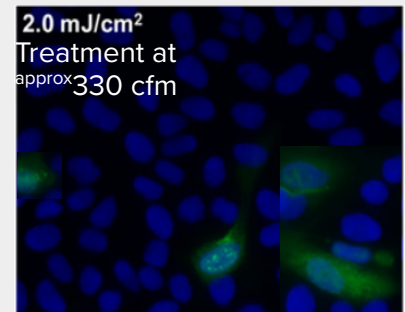
This data is then compared with the published data for air disinfection using Far-UV to provide a relative estimate for Far-UV cleaning of the air.

Typical fluorescent images of MDCK epithelial cells infected with influenza A virus (H1N1). The viruses were exposed in an aerosolized form in the irradiation chamber to doses of 0, 0.8, 1.3 or 2.0 mJ/cm² of 222-nm far-UVC.

Infected cells fluorescent green (blue=nuclear stain DAPI; green=Alexa Fluor-488 conjugated to anti-influenza A antibody). Images taken with 40× objective.

For the GERMUSTER FAR-UV per air exchange at:

- 330 cfm the unit achieves 1.51 mJ/cm²



Advantages of FAR-UV

- Much safer for human skin and eyes
- Applications for human occupied areas
- Better against spores and preventing re-growth
- Strong and effective germicidal properties
- Eco-friendly lamps with no mercury
- No warm up time with instant on/off

